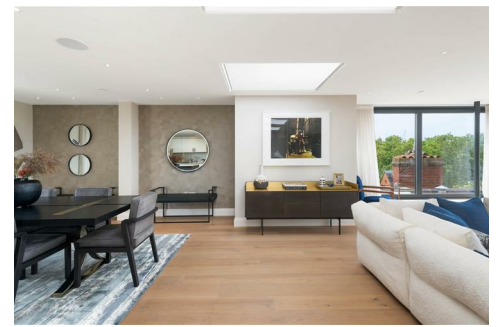




CHATTERTON | REES



22 Buckingham Gate, London, SW1E 6LB
Asking price £3,900,000

A substantial fifth floor penthouse apartment (with lift) within this beautiful building opposite St James's Park.

The flat is split over two floors. The fifth floor comprises of three large bedrooms; the master bedroom has an en suite bathroom and dressing room, The two other bedrooms each have their own bathrooms, one being an en suite. the flat further offers a utility room. The 6th floor we have a huge living space, with bi fold doors onto a very impressive south facing terrace overlooking St. James's Park and beyond.

Luxury en suite bathrooms, high specification Italian designed kitchens, comfort cooling, under floor heating, fumed oak flooring and fully controlled LED light systems. This apartment is ideal for a home or pied a terre, and convenient for all of Central London.

22 Buckingham Gate is known as "The Royal Quarter". Many of London's most famous landmarks and institutions can be found a short distance away including The Houses of Parliament, Westminster Abbey, and Buckingham Palace. London's famed shopping districts are all within a 1.5 mile radius of 22 Buckingham Gate including Oxford Street, Harrods and Fortnum & Mason.

Floor Plan

Area Map



Energy Efficiency Graph



These particulars, whilst believed to be accurate are set out as a general outline only for guidance and do not constitute any part of an offer or contract. Intending purchasers should not rely on them as statements of representation of fact, but must satisfy themselves by inspection or otherwise as to their accuracy. No person in this firm's employment has the authority to make or give any representation or warranty in respect of the property.